

**APPENDICE I**

Sono riportati in questa Appendice:

- esempio di messaggio GO-NO GO;
- esempio di previsione per il C130/L100;
- esempio di documentazione di volo ('folder') per il C130/L100;
- punti di riferimento per la determinazione della visibilità orizzontale a BTN/SMZ;
- modello di bollettino giornaliero bilingue in chiaro;
- numeri telefonici e indirizzi e-mail di utilizzo operativo.

**GO message**

..... (date)

**FROM:** Expedition Leader                      Mario Zucchelli Station

**TO:**        PNRA Consortium Office            Christchurch                      Fax 0064 3 3580764  
               SAFAIR Operation Manager        Christchurch                      Fax 0064 3 3667590

**1. GLOBAL WEATHER SITUATION fm 07<sup>th</sup> Nov 0700 L.T. to 8<sup>th</sup> Nov 0700 L.T. ALOFT (500 hPa)**

A wide omega shaped low pressure system is affecting eastern part of Ross Sea area and the Ross Ice shelf, building a weak southern flow towards McMurdo Sound; at the same time, a ridge spreading from the high pressure area lying on the inner Plateau, extends its influence over the whole Victoria Land. As a result central and southern part of Victoria Land, will face clear and flying weather; however, the moderate horizontal pressure gradient settled between the windward side and the lee side of the mountains, will build a strong western wind flow with the feature of katabatic wind over central Victoria Land between Northern Foothills and David Glacier and, above all, over Terra Nova Bay area.

**SURFACE**

Over Terra Nova Bay mostly clear or scattered by mid and high levels clouds except for isolated patches of low clouds and advective fog along the coastal areas from the Campbell and Wood Bay. Visibility and definitions good. Moderate to strong (25-35 kts) western winds gusting up to 50kts during the first part of the day, decreasing during the afternoon to 20-30kts by 0500 utc (18.00loc).

**2. WEATHER FORECAST**

- a) **FORECAST VALIDITY: FM 06<sup>th</sup> NOV 18.00/Z TO 07<sup>th</sup> NOV 18.00/Z ( 07<sup>th</sup> NOV 07.00 LT to 08<sup>th</sup> NOV 07.00 LT)**
  - b) Ceiling: CAVOK ET TEMPORARY FEW/SCT 100 DUE TO LENTICULAR CLOUDS.
  - c) Weather: CHANCE OF EITHER DRIFTING OR BLOWING SNOW TILL 11.00 L.T. THEN, NOT SIGNIFICANT WEATHER.
  - d) Visibility: UNRESTRICTED.
  - e) Wind: 26015G25KT BECMG 061922Z (070811L) 27030G50KT.
  - f) TRUE RWY WINDS: expected THR 21 "A" 27025G40KT – WINDS "B" 27030G45KT. ET FROM 07.00 UTC (20.00L.T.) "A" 25015G25KT – WINDS "B" 25020G35KT.
  - g) Turbulence: MOD BTN GND AND FL 060.
  - h) Wind shear: MOD BTN GND AND FL 030.
  - i) Temperature: -12 °C.
  - j) Lowest wind chill temperature (average wind speed): -39 °C.
- .....

Weather Forecaster

**3. ICE RUNWAY SITUATION**

- a) Ice runway surface: good
- b) Ice thickness: approx. 2.20 m
- c) Ice temperature: lower than  $-12^{\circ}\text{C}$

**4. TERRA NOVA BAY FLIGHT FOLLOWING FACILITIES**

- a) HF radio: 5371 KHz – 8245 KHz
- b) VHF – Air radio: 129.7/118.1 MHz
- c) Iridium telephone: 00881631431782
- d) INMARSAT tel.: 008721151252
- e) Voice recorder: not operational

**5. MAGNETIC STORM FORECAST**

Not available.

**6. HERCULES GROUND SUPPORT FACILITIES**

- a) GPU 115/200 V, 400 Hz: available
- b) ATLAS air press. starter: available
- c) Fuel Jet A-1: available
- d) Refuelling system: available
- e) Heat blowers: available

**7. EMERGENCY**

- a) Firefigthing vehicles: 3 trucks available
- b) Ambulance: available
- c) Helicopters: 2 available

.....

Operation Manager

**AS ABOVE DESCRIBED IT IS REQUIRED TO CARRY OUT THE SIXTH FLIGHT OF THE XXI<sup>st</sup> EXPEDITION THAT HAS AS DESTINATION MCMURDO.**

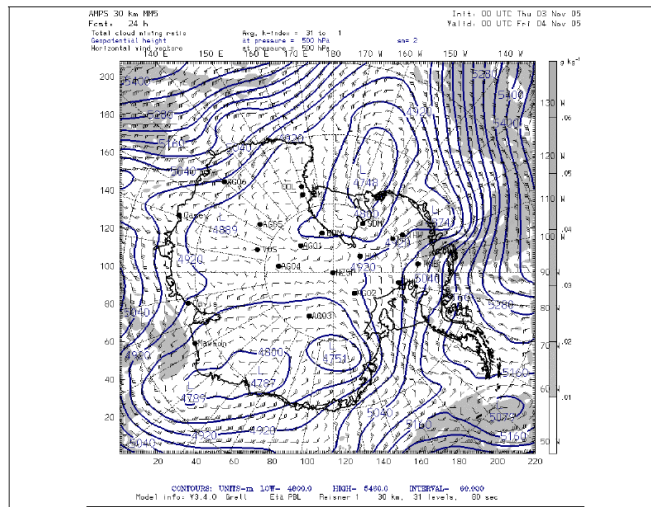
.....

Expedition Leader

**Terra Nova Bay Weather Office**

**Route forecast NZCH – NZTB**

(update of November 04<sup>th</sup> at 04:30 local time, next message will be the GO-NOGO)



**ETD 10 loc 04<sup>th</sup> Nov 2005 -ETA 17:30 loc 04<sup>th</sup> Nov 2005**

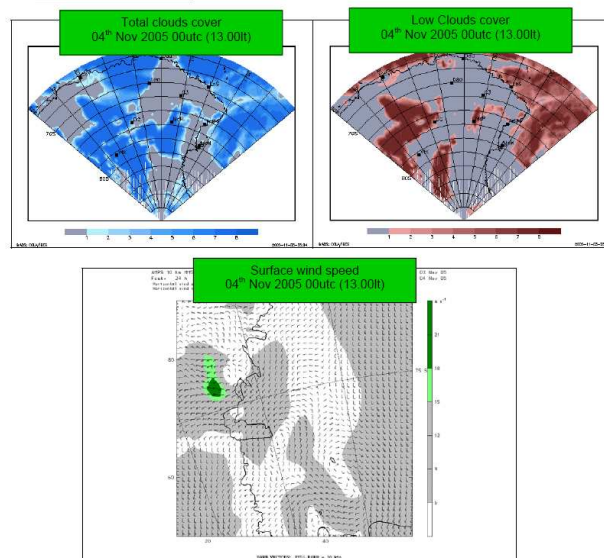
*Synoptic situation aloft* : The deep low pressure system, that during the last 24 hours has been affecting the whole Victoria Land with strong barrier wind flow and thick cloudiness, is filling up, though partially, and being pushed eastward by the new surging and spreading eastward, towards the coastline of Victoria Land, of a ridge of high pressure on the inner Plateau; as a result the Northern Foothills area and the central and southern part of Victoria Land, will face clear and flying weather. However, due the steady strong horizontal pressure gradient settled between the windward side and the lee side of the mountains, the cold air masses from the inner Plateau will continue to move to the convergence zone lying ashore and a moderate western flow taking the feature of katabatic wind flow will occur by late evening, over central Victoria Land and, above all over Terra Nova Bay area.

Forecast: [TNB area from 03<sup>rd</sup> Nov 2005 at 1200z to 04<sup>th</sup> Nov 2005 at 0600z (from 04<sup>th</sup> Nov 2005 at 0100 loc to 04<sup>th</sup> Nov 2005 at 1900 loc):

Starting broken by mid and high levels clouds but becoming clear. Visibility and definitions good.

Moderate to strong (20-35 kts) western winds becoming light or moderate western (15-25kts) ones by 0200 utc (1500loc)

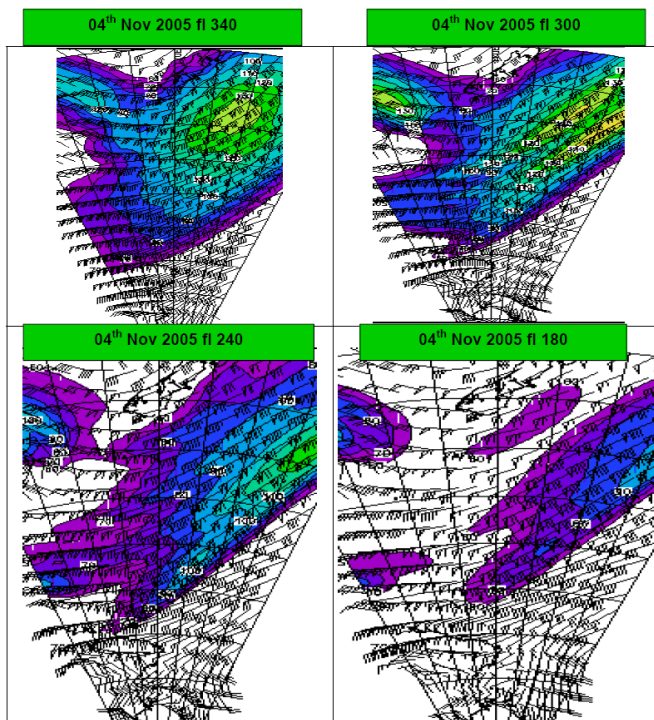
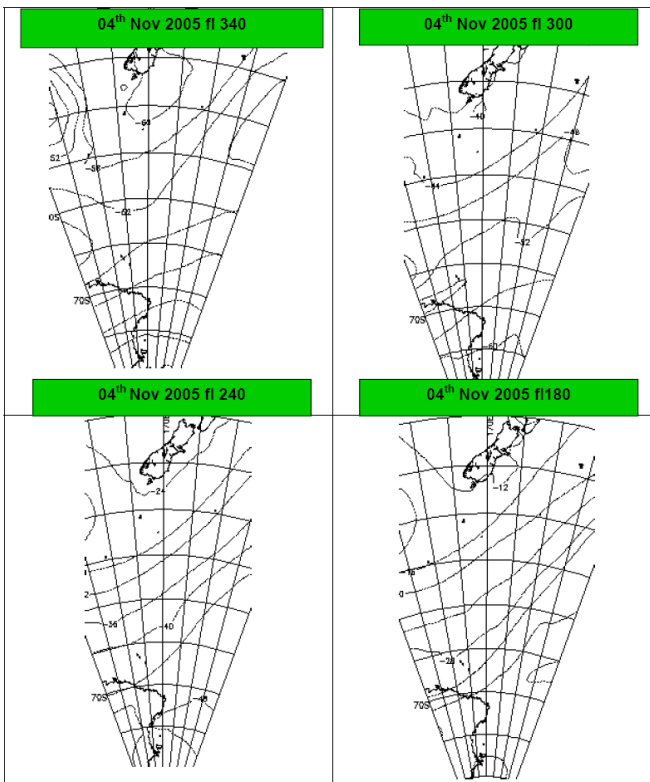
The average wind speed (main direction of true wind being 260-270 degrees) expected on the ice runway by the landing time (assuming the take off time by 10.00 local time should be 17.30-18.00 l.t.) will be 12kts in "alpha" (landing path, 300 meters far the thresholds) and about 15kts in "bravo" point (400meter after threshold 21 on the right side of the ice runway). The chance of crosswind in these spots should be **much less than 15kts**.



Forecast: [MCM area from 03<sup>rd</sup> Nov 2005 at 1500z to 04<sup>th</sup> Nov 2005 at 1500z (from 04<sup>th</sup> Nov 2005 at 0400 loc to 05<sup>th</sup> Nov 2005 at 0400 loc):

Mostly broken by mid levels clouds (ceiling 5000ft) with moderate eastern winds; good visibility and definitions temporary fair due to drifting snow. Becoming after 0300z (16.00l.t.) scattered or broken by mid and high levels clouds (ceiling 8000ft) still with moderate eastern winds.

*Forecast:* [UPPER AIR area forecast at 04<sup>th</sup> Nov 2005 at 0000utc (1300loc)]:  
 Strong westerlies off Southern Island becoming light to moderate south-western (true) winds but chance of moderate turbulence above FL180 along the Antarctic convergence zone; cruising levels suitable: any between fl200-280.



Aviation Forecast

**TAF NZTB 031206Z (040119L) 27035G45KT 9999 FEW030 SCT060  
 BKN090 BECMG 031824Z (040713L) 26020G35KT 9999 FEW060  
 SCT100 BECMG 040206Z (041519L) 27015G25KT CAVOK=  
**TAF NZIR 031515 (040404L) 09013KT 9999 SCT120 SCT180  
 QNH2865INS GRID26013KT=****

*The Forecaster*  
 Major Giorgio ALESSIO

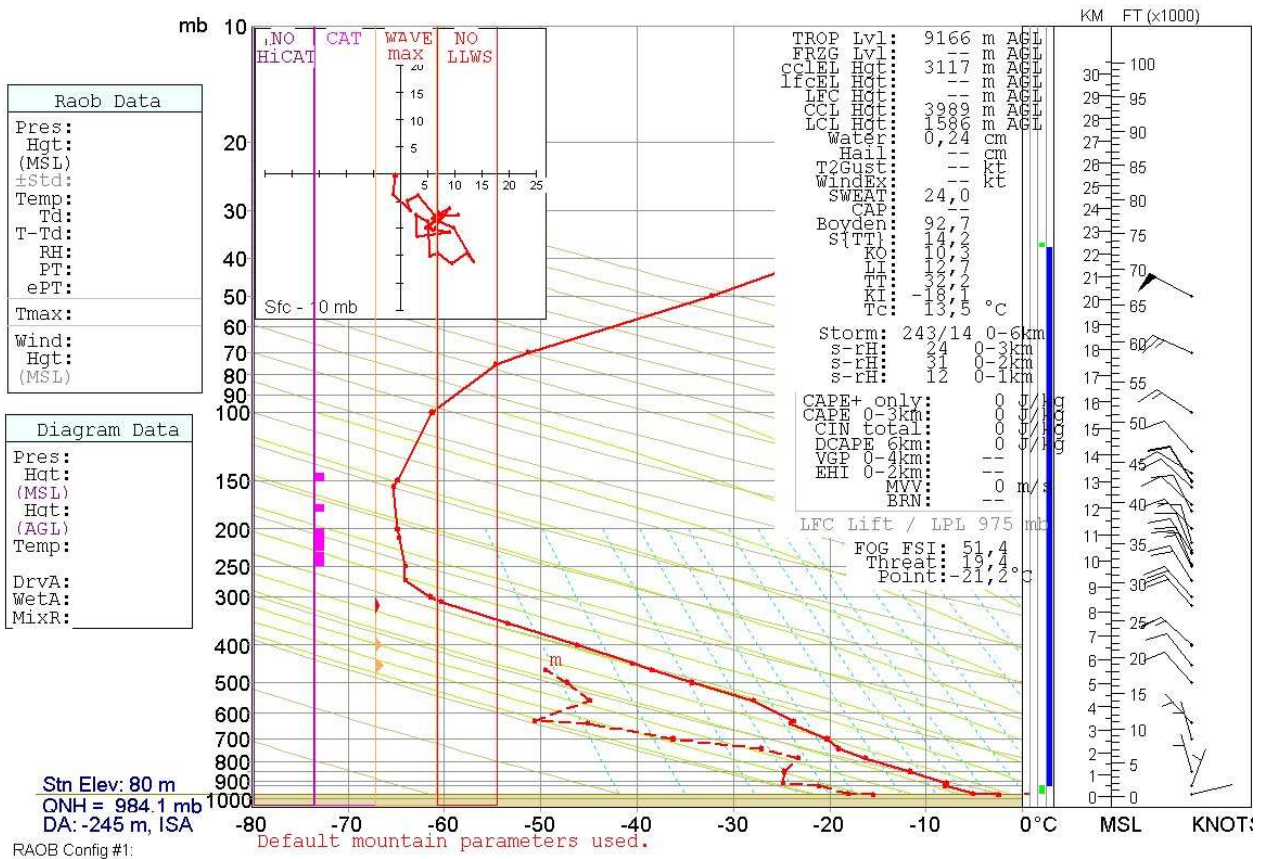


Mario Zucchelli Station Weather Office  
Terra Nova Bay

Route forecast NZTB-NZCH

ETD 06.30z 28<sup>rd</sup> November 2006-ETA 14.50z 28<sup>th</sup> November 2006

BAIA TERRA NOVA – SOUNDING AT 00.00 UTC OF 28<sup>th</sup> November

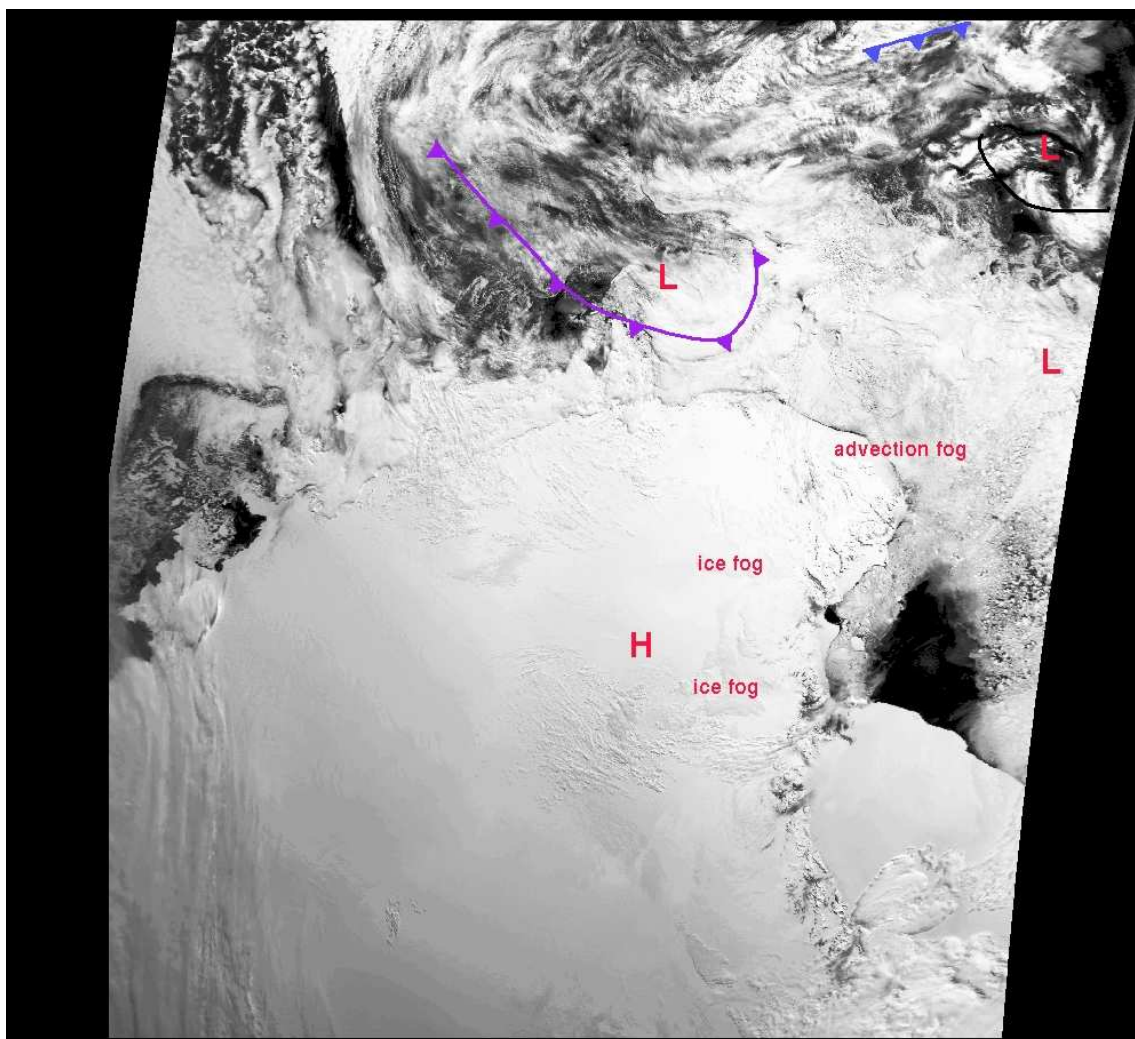


RAOB: TEMP\_2006112800.TXT // 89662 - ---- - BAIA TERRA NOVA, IY at 23Z 27 nov 2006

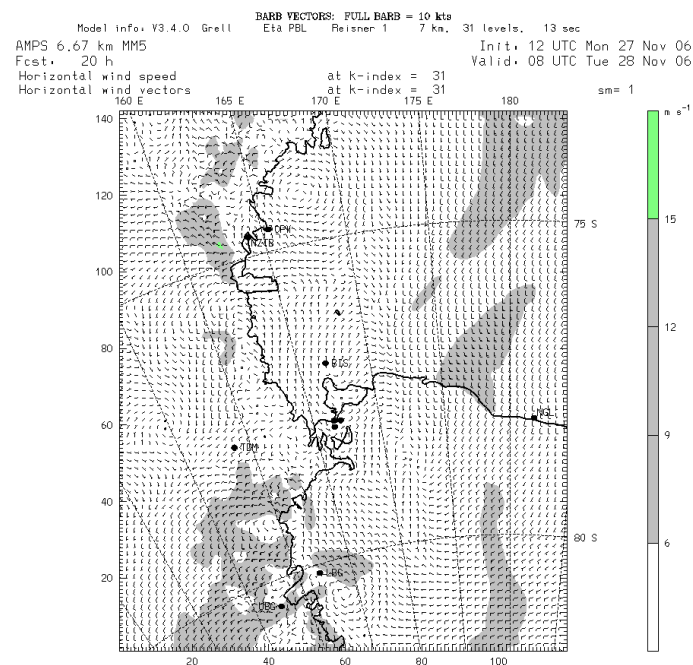
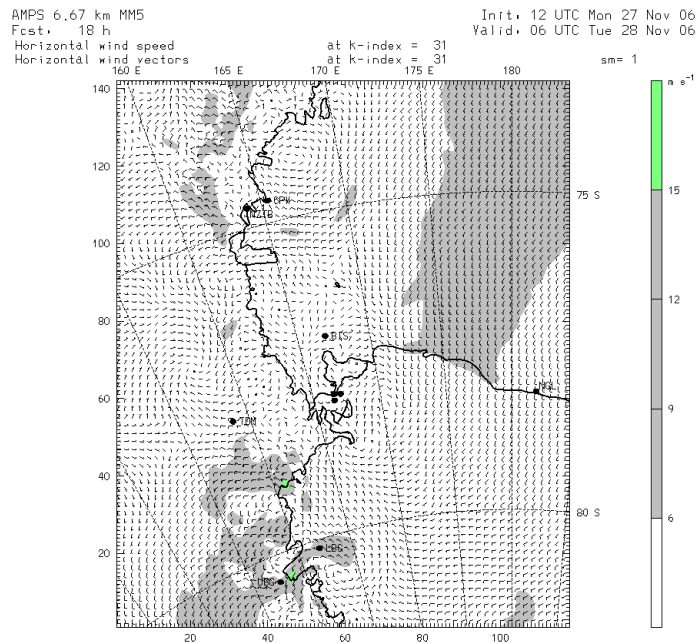
Data Type: CODED Integrated data levels: 43

Lat: 74°42'00" S Lon: 164°06'00" E Elev: 80 meters

Level	Height (m-AGL)	Pres (mb)	T (C)	Td (C)	RH (%)	DD/FF (deg/kts)	CAT (FAA)	LLWS	Icing Type (AF @ 75% RH)	WAVE/X
										W Turb nm fpm max
1	0	975,0	-2,5	-15,5	36	75/1				
2	49	969,0	-5,1	-18,1	35					
3	412	925,0	-8,1	-21,1	34	20/4				
4	530	911,0	-7,9	-24,9	24					
5	1065	850,0	-11,7	-24,7	33	345/7				
6	1679	784,0	-16,3	-23,3	55					
7	2091	724,0	-19,1	-27,1	49					
8	2524	700,0	-20,3	-36,3	23	345/5				
9	3194	639,0	-24,1	-45,1	13					
10	3229	636,0				320/5				
11	3310	629,0	-23,7	-50,7	6					
12	4190	557,0	-27,9	-44,9	18					
13	4956	500,0	-34,3	-47,3	26	320/10				
14	5474	464,0	-38,5	-49,5	30					
15	5664	452,0				325/10		2,03	199	light
16	5760	446,0	-40,5	m						
17	6538	400,0	-46,3	3		315/14				
18	6555	399,0				315/14		3,46	147	light
19	7450	351,0	-53,5	m						
20	8165	316,0				320/21		4,34	101	light
21	8318	309,0	-60,3	m						
22	8516	300,0	-61,5	m		320/19				
23	9166	272,0	-64,1	m		330/19				
24	9715	250,0	-64,1	m		335/16				
25	9766	248,0				340/16	LGT			
26	10220	231,0				330/10				
27	10331	227,0				340/8	LGT			
28	10619	217,0				345/12				
29	10798	211,0	-64,7	m			LGT			
30	11137	200,0	-64,9	m		320/14				
31	11805	180,0				335/11	LGT			
32	12057	173,0				315/11				
33	12713	156,0	-65,3	m		315/10				
34	12919	151,0				330/11				
35	12961	150,0	-64,9	m		330/12	LGT			
36	13220	144,0				305/11				
37	14067	126,0				320/10				
38	15532	100,0	-61,3	m		305/13				
39	17348	75,1	-54,7	m						
40	17794	70,0	-51,3	m		295/26				
41	20074	50,0	-32,3	-71,3	1	300/48				
42	22203	37,3	-17,9	-61,9	1					
43	22386	36,4	-18,5	-62,5	1					



Surface winds  
28<sup>rd</sup> November 2006 06-08utc (19-21L.T.)



Model info: V3.4.0 Grell Eta PBL Reissner 1 7 Km. 31 levels. 13 sec

**Forecast: [(TNB area from 28<sup>th</sup> nov 2006 06.00z to 29<sup>th</sup> nov 2006 at 06.00z (from 28<sup>th</sup> november 2006 19.00 l.t. to 29<sup>th</sup> november 2006 at 1900 l.t.):**

Sky clear and light northern wind. Both visibility and definitions unrestricted.

The average wind speed expected on the ice runway by the take-off time (*assuming that be by 06.00-06.30 zulu time i.e. 19.00-19.30 l.t.*) will be 08 kts in “alpha” point and in “bravo” point too (400 meters after threshold 24 on the right side of the ice runway) with main direction is 290-330 with chance of light crosswind in these spots but below 10kts.



**Forecast: [(MCM area from 27<sup>th</sup> nov 2006 21.00z to 28<sup>th</sup> nov 2006 at 21.00z (from 28<sup>th</sup> november 2006 10.00 I.t. to 29<sup>th</sup> November 2006 at 10.00 I.t.):**

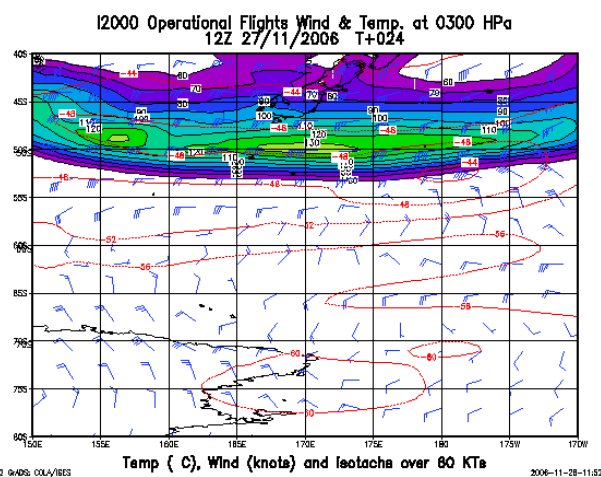
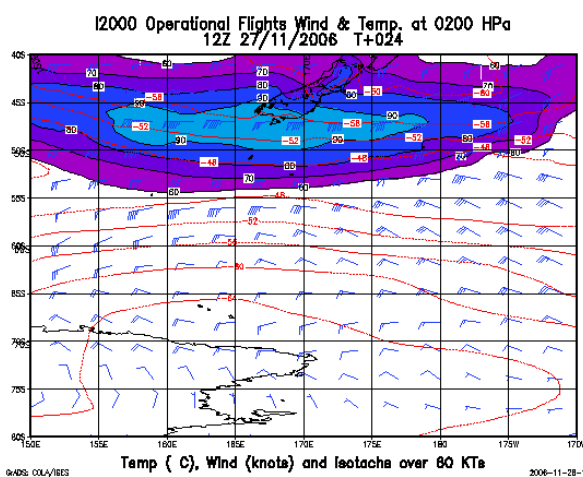
Scattered to broken by mid and high levels cloudiness, light north-western winds, both visibility and definitions good. Cloudiness increasing after 12.00 z of 27<sup>th</sup> nov 2006 (01.00 I.t. of 28<sup>th</sup>) and chance of light snow.

**UPPER AIR AREA FORECAST from 28<sup>th</sup> nov 2006 06.00z to 29<sup>th</sup> nov 2006 at 06.00z (from 28<sup>th</sup> november 2006 19.00 I.t. to 29<sup>th</sup> November 2006 at 1900 I.t.)**

Strong western winds between latitudes 45°S and 60° S at all levels, with strong turbulence due to shear. Light northern or north-western winds below 60°S at all levels and cruising northbound with no turbulence .

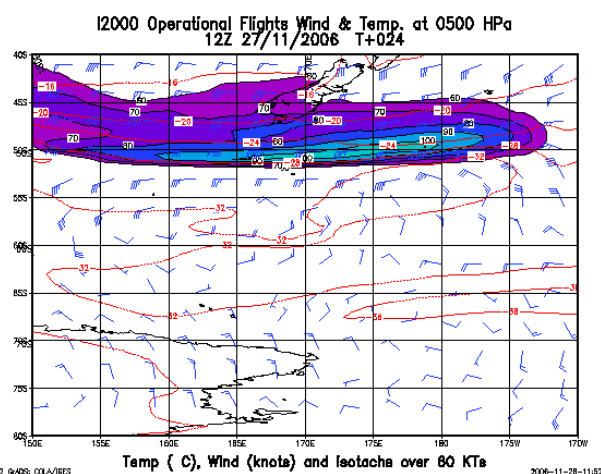
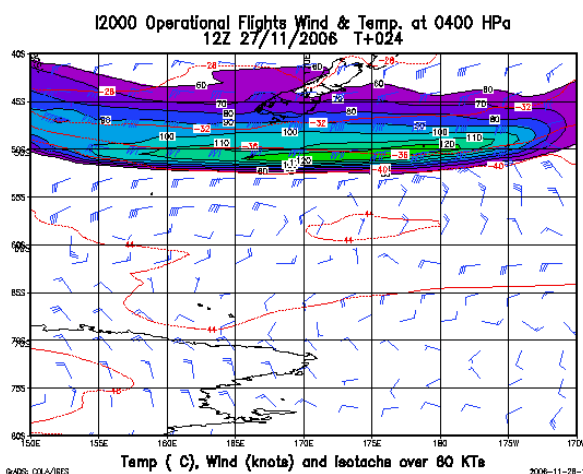
## f1 350-390

## f1 300



## f1 240

## f1 180



**Mario Zucchelli Station's (Baia Terra Nova) Aviation Forecast**

NZTB TAF 280624Z (281913L) 30008KT CAVOK BECMG 282224Z (291113L) 12010KT  
9999 FEW020 SCT100=

**Mc MURDO Ice Runway Aviation Forecast.**

NZIR 272121 33005KT 0400 FG BKN000 OVC002 QNH2901INS FG BKN000  
GRID14005KT BECMG 2224 33008KT 9999 NSW FEW005 SCT170 QNH2890INS  
GRID14008KT BECMG 1214 31008KT 9999 VCSN BKN010 QNH2878INS GRID12008KT  
BECMG 1820 32008KT 9999 SCT010 SCT150 QNH2874INS GRID13008KT=

**TAF AUCKLAND (NZAA) =**

**NZAA 272225Z 280024 24018KT 30KM SCT040 BECMG 0911 26008KT BECMG 2123  
30018KT=**

**TAF WELLINGTON (NZWN) =**

**NZWN 272225Z 280024 34020G30KT 40KM SCT040 BECMG 2123 35030G45KT=**

**TAF CHRISTCHURCH (NZCH) =**

**NZCH 272221Z 280024 32015KT 40KM SCT040 BECMG 0911 34005KT BECMG 2123  
32015G25KT=**

SIGMET NEW ZEALAND

**WSNZ21 NZKL 272128**

NZZC SIGMET 02 VALID 272128/280128 UTC OR 281028/281428 NZDT NZKL-  
NZFIR ISOL SEV TURB FCST BLW FL120 SOUTH OF NZHK/NZCH INTSF

**WSNZ21 NZKL 280009**

NZZC SIGMET 01 VALID 280009/280409 UTC OR 281309/281709 NZDT NZKL-  
NZFIR ISOL SEV TURB FCST BLW FL120 SOUTH OF NZHK/NZCH INTSF=

**The Forecaster  
Capt. Roberto BOVE**

**PUNTI DI RIFERIMENTO PER LA DETERMINAZIONE  
DELLA VISIBILITA' ORIZZONTALE DI BTN/SMZ**

<b>QUADRANTE</b>	<b>RIFERIMENTO</b>	<b>DISTANZA</b>		<b>ALTEZZA</b>		<b>AZIMUT</b>
		<b>M</b>	<b>Nm</b>	<b>m</b>	<b>ft</b>	<b>gradi</b>
<b>SUD</b>	Pinguinattolo	70				
<b>SUD</b>	Collina			800	2.400	
<b>OVEST</b>	Eneide	600	0.3	80	250	
<b>OVEST</b>	Mt ABBOTT	7.500	3.8	1.022	3.500	260°
<b>OVEST</b>	Hangar 1 e 2	50				
<b>QUOTA 460</b>		7.000	3	460	1.700	310°
<b>NORD</b>	Mt KEINEATH	18.000	9.5	1.000	3.575	355°
<b>NORD</b>	Mt BROWNING	9.000	4.8	700	2.490	005°
<b>NORD</b>	Punta rocciosa inizio Campo Base	400	0.25			
<b>NORD-EST</b>	Mt MELBOURNE	42.000	22	2.700	8.800	025°
<b>NORD-EST</b>	Shield NUNATAK	19.000	10	400		
<b>NORD</b>	Cape WASHINGTON	38.000	20	200	895	080°
<b>NORD</b>	GONDWANA	10.000	4.75	s.l.m.		035°
<b>EST</b>	CAMPBELL glacier ice tongue	14.000	7.8	s.l.m.		100°
<b>EST</b>	Punte rocciose verso il mare	400	0.25	s.l.m.		130°

**UFFICIO METEOROLOGICO - BAIJA TERRA NOVA  
WEATHER OFFICE - TERRA NOVA BAY**

Alla Sala Operativa  
Al Capo Spedizione

**BOLLETTINO METEOROLOGICO DEL 22/11/2003  
Meteorological Bulletin of: 22/11/2003**

Osservazioni delle ore 09.00 locali - Weather observations at 09 .00 L.T.

STAZIONE (Site)	VENTO/Wind Dir (°) / int (kts)		TEMP. °C	UMID. RELAT. RH %	PRESS. hPa
ENEIDE (Baia Terra Nova)	120	4	-9	63	969
ALESSANDRA (Cape King)	280	3	-11	71	961
LOLA (Tourmaline Plateau)	CAL	MA	-18	35	792
ARELIS (Cape Ross)	020	01	-10	53	961
RITA (Enigma Lake)	310	2	-11	47	948
SOFIA_B (David Glacier)	180	18	-23	57	798
ZORAIDA (Medio Priestley)	330	27	-17	46	900
MODESTA (Alto Priestley)	290	17	-34	61	755
SILVIA (Cape Phillips)	230	21	-13	70	913
WILLIE FIELD (McMurdo)	135	8	-11	////	
MANUELA (Inex. Island)	270	21	-15	62	970
GIULIA (Mid Point)	220	7	-42	59	705
IRENE (Sitry Point)	140	12	-36	60	750
DOME C	210	7	-47	////	////

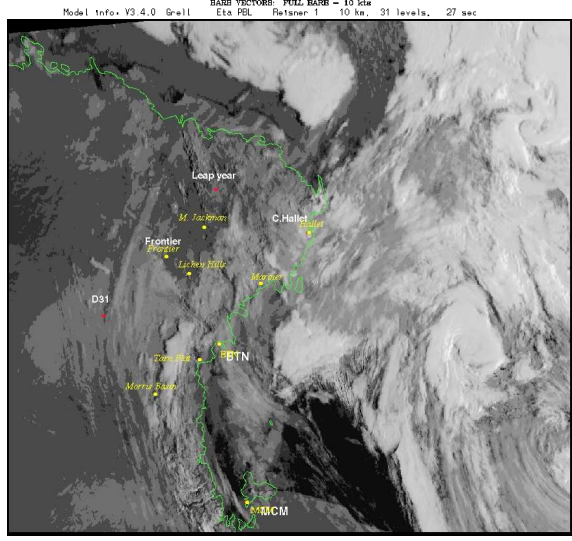
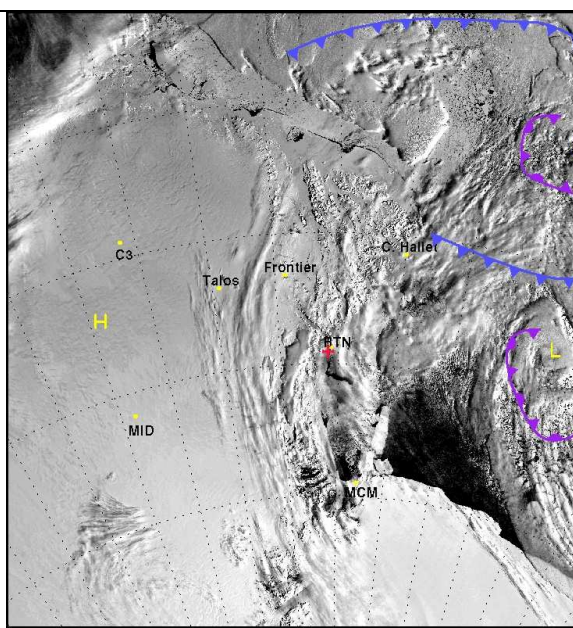
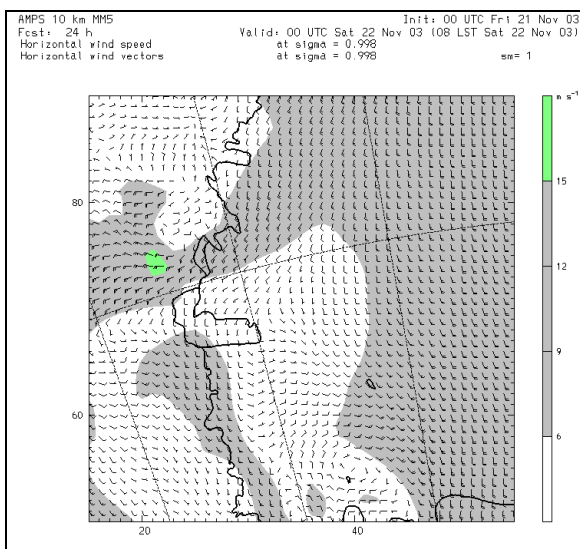
**INFORMAZIONI DI CARATTERE AERONAUTICO: (orario GMT)  
AERONAUTICAL BULLETINS AND FORECAST: (GMT time)**

NZTB METAR 211800Z (220700L) 20003KT CAVOK M10/M15 Q0980 A2893 RMK BKN130  
SDG/HDG GRID36003KT A00000KT B00000KT C24010KT=  
NZTB 211812Z (220701L) NZTB 211812Z 18010KT 9999 SCT050 SCT080 TEMPO 211923Z  
(220812L) 24020G30KT BECMG 220407Z (221720L) 9999 SCT30 BKN060=

Temperatura di windchill a Terra Nova alle ore 10.00 locali: -27 °C  
Windchill temperature in Terra Nova at 10.00 local time: -27 °C

**Dati Statistici di ieri 19/11/2003**

Temperatura Massima	(ore : 16.00L)	-4.6 °C
Temperatura Minima	(ore : 23.00L)	-8.4 °C
Umidità Minima	(ore : 17.00L)	31%
Umidità Massima	(ore : 22.00L)	77%
Vento Massimo Dir./Int.	(ore : 15.00L)	250°30 nodi



**Situazione Sinottica:** il settore centro-settentrionale della Terra Vittoria è ancora marginalmente influenzato dalla circolazione da sud, alimentata dal minimo depressionario ancora presente sul settore centro-orientale del Mare di Ross. Annuvolamenti stratiformi sono presenti sulle zone costiere tra Coulman Island a Cape Adare e nelle zone interne del David Glacier.

**Synoptic situation:** the northern and central part of Victoria Land is still, though marginally affected, by the southern circulation due to the low pressure settled on the eastern part of Ross Sea. Low layered clouds are still affecting the coastal areas between Coulman Island and Cape Adare, and the inner zones of David Glacier.

Pictures courtesy of NOAA and DMSP satellite at 2118.30utc and run of 12utc AMPS-MM5.

<p><b>BAIA TERRA NOVA</b></p>	<p><b>Italiano:</b> Poco nuvoloso per nubi medio – alte. Visibilità ottima e buona definizione suolo-orizzonte. Venti deboli meridionali o temporaneamente moderati da sud-ovest nella parte centrale della mattinata; tendenza ad aumento della nuvolosità in serata.  <b>English:</b> Scattered or Broken due to mid and high levels clouds; Both visibility and definitions, good; light southern winds and temporary moderate winds from the western sectors.</p>
<p><b>MCMURDO SOUND</b></p>	<p><b>Italiano:</b> poco nuvoloso o nuvoloso per nubi medie e alte, senza precipitazioni; venti deboli variabili; visibilità e definizioni ottime.  <b>English:</b> scattered or broken by mid and high levels clouds; light changeable winds; good visibility and definitions.</p>

- **Tendenza per le prossime 24 ore (Area di BTN):** nuvolosità in temporaneo aumento nella prima parte della giornata
- **Outlook for the next 24 hours (TNB Area):** scattered or temporary broken early morning.

the forecasters  
 Major Angelo ROMITO – Dr. Marco TADINI

**OPERATIONAL E-MAIL ADDRESS AND PHONE NUMBERS  
TABELLA NUMERI IRIDIUM (nuova XXII<sup>a</sup>)**

**NUMERI IRIDIUM HELICOPTER NZ**

<b>HDM (ITA)</b>		<b>00881 631 574 289</b>
<b>HNK (ITA)</b>		<b>00881 631 574 286</b>
<b>HDE (GER)</b>		<b>00881 621 465 114</b>
<b>HNQ (GER)</b>		<b>00881 621 464 842</b>
<b>HFH (ITA)</b>		<b>00881 621 464 843</b>
<b>HJV (ITA)</b>		<b>00881 621 464 841</b>

**NUMERI IRIDIUM TWIN OTTER**

<b>KBO (ITA)</b>	Bob Heath-Chris Sandoz Blake Lawson-Mark Vinck	<b>00881 621 468 176</b>
<b>KBC (ITA)</b>	Steve King-Mark Randon Blake Lawson-Mark Vinck	<b>00881 621 468 233</b>
<b>CKB (GER)</b>	Bob Red Baron Monica Rosie the Riveter	<b>00881 621 468 204</b>
<b>FBL (BAS)</b>		<b>00881 631 831 241</b>

**NUMERI IRIDIUM TERRA NOVA**

<b>SMZ/OPS</b>	<b>00881 631 431 782</b>	
<b>Sala Radio</b>	<b>00881 631 438 067</b>	
<b>SMZ</b>	Standard B	<b>00872 324 799 098</b>
	Capo Spedizione Standard B	<b>00872 324 799 099</b>
	Sala Radio Standard B	<b>00872 382 228 029</b>
	Sala Radio Standard B1	<b>00872 324 700 744</b>
	Sala Radio SCOTT 1	<b>0064 2 409 6750</b>
	Sala Radio SCOTT 2	<b>0064 2 409 6751</b>
	Sala Radio SCOTT 3	<b>0064 2 409 6752</b>
<b>GONDWANA</b>	<b>00881 641 424 432</b>	<b>00881 641 424 433</b>
<b>ED. POINT</b>	<b>00881 631 415 079</b>	
<b>PORT.1</b>		<b>00881 641 423 840</b>
<b>PORT.2</b>		<b>00881 641 423 848</b>
<b>PORT.3</b>		<b>00881 621 454 359</b>
<b>PORT.4</b>		<b>00881 641 423 850</b>
<b>PORT.5</b>		<b>00881 621 454 362</b>
<b>PORT.6</b>		<b>00881 631 431 748</b>
<b>PORT.7</b>		<b>00881 621 454 360</b>
<b>PORT.8</b>		<b>00881 621 454 358</b>

**Linee Satellitari di CONCORDIA – DOME C (nuova XXII<sup>a</sup>)**

**Standard B - CONCORDIA**

PABX	00872 324700178
	00872 324700739
HANDSET	00872 324700738
FAX su PABX	00872 324700180
	00872 324700740

**Standard C - CONCORDIA**

424700616 Base CONCORDIA [domec@les-raisting.de](mailto:domec@les-raisting.de)

42470089 Base MONTAGGIO [domecbase@les-raisting.de](mailto:domecbase@les-raisting.de)

**IRIDIUM**

FISSO ATTIVO (dal 05/11/05)	00881 621454367
PORTATILE	00881 621454368
PABX CAMPO ESTIVO	00881 631438068
PORTATILE	00881 631431748
CONCORDIA	00881 631438468
TELEX (STANDARD C)	582 424 700 616

E-mail address standard C:

[domec@les-raisting.de](mailto:domec@les-raisting.de)

E-mail address con Skyfile:

[concordia@Les-Raisting.de](mailto:concordia@Les-Raisting.de)

E-mail address Internet

[concordiabase@Les-Raisting.de](mailto:concordiabase@Les-Raisting.de)

FLEET 77 (FONIA, E-MAIL, TD)

[cnrpds@inmarsat.francetelecom.fr](mailto:cnrpds@inmarsat.francetelecom.fr)

E-MAIL

00872 763953823

[btr@inmarsat.francetelecom.fr](mailto:btr@inmarsat.francetelecom.fr)

Dumont d'Urville (DdU)

Phone: 00872 322 799 395

Fax : 00872 322 799 398

Telex: 582 492 080 425 (meteo)

Telex: 582 422 799 163 (bt radio)

Telex: 582 492 080 412 (IPEV)

E-mail: [radio@ifrtpddu.ifremer.fr](mailto:radio@ifrtpddu.ifremer.fr)

**McMurdo (McM)**

- Phone (43 o 48 o 450) 00642409 2523 # McM weather
- Phone (43 o 48 o 450) 00642409 2446 # Mc Centre
- Phones Helo's OPS 006424092277# oppure 006424092344#
- [mcm.macops@usap.gov](mailto:mcm.macops@usap.gov)
- [mcm.Weather.Forecaster@usap.gov](mailto:mcm.Weather.Forecaster@usap.gov) Inoltro msg meteo
- [mcmobsvr@usap.gov](mailto:mcmobsvr@usap.gov) Inoltro msg meteo
- [chester.clogston@usap.gov](mailto:chester.clogston@usap.gov) Chester Clogston

**Frequenze radiofoniche utili:**

**Concordia DOME C: avio HF 8245 Mhz admin 8738 Mhz**

**Mc OPS: 7995 Mhz, 11553 Mhz e 4770 Mhz**

**Scott Base 6770 Mhz**

**e-mail utili:**

**Fixed-Wings (coordinamento operazioni T.O )** [Julie.Grundberg@usap.gov](mailto:Julie.Grundberg@usap.gov)

**Helio OPS (PHI) a Mc Murdo** [Liz.Kauffman@usap.gov](mailto:Liz.Kauffman@usap.gov)

[Candace.Fitzpatrick@usap.gov](mailto:Candace.Fitzpatrick@usap.gov)

**Mc OPS:** [Mary.Rubarsky@usap.gov](mailto:Mary.Rubarsky@usap.gov)

**Mc Centre:** [macctr@usap.gov](mailto:macctr@usap.gov)

**BUREAU OF METEOROLOGY – MELBOURNE**

- [D.Turner@bom.gov.au](mailto:D.Turner@bom.gov.au)
- [cmop@bom.gov.au](mailto:cmop@bom.gov.au)
- [dlt@bom.gov.au](mailto:dlt@bom.gov.au)

**CHRISTCHURCH**

- ENEA office ([eneachch@xtra.co.nz](mailto:eneachch@xtra.co.nz))

**Weather office in CHCH**

- [atswx@iac.org.nz](mailto:atswx@iac.org.nz) Inoltro msg meteo
- Phone \* 72 \* 10499 # (43 o 48 o 450) 0064 3 3581492 #
- Fax \* 72 \* 10499 # (43 o 48 o 450) 0064 3 3581463 #